

Upper Shock Mount Monoball Cartridge - Installation Instructions

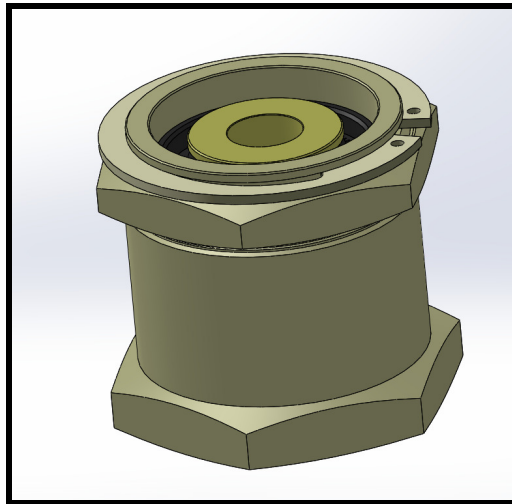
Part #2011002

Cars applicable:

996/997 C2, C4	Front
986/987	Front And Rear

Parts list:

Quantity	Description
2	Upper Shock Mount Cartridge Assemblies



Upper Shock Mount Monoball Cartridge

Tools Required:

- 1-11/16" Hole Saw
- 1- 15/16" socket
- Razor knife
- Snap Ring Pliers
- Bench Vice

Introduction:

Congratulations on your selection of the Elephant Racing upper shock mount monoball insert kit! Now you can gain the added performance of spherical bearing upper shock mounts while retaining a factory appearance.

These inserts use high strength hardened steel spherical bearings and replace the factory compliant rubber bushings in the shock mount plate. The teflon lined spherical bearings used in our kit are entirely maintenance free and require no supplemental lubrication. These inserts also have seals installed in order to prevent contamination from water or grime, thus extending bearing life. This makes the Elephant Racing rear upper shock mount monoball insert perfect for regular street use, as well as extended abuse on the race track in all conditions.

Step-by-Step Installation -

NOTE: ALL PICTURES ARE 996/997; STEPS ARE THE SAME FORE 986/987 FRONT AND REAR

1 – Remove the factory upper mount from the car. Refer to an appropriate shop manual for instructions.

2 – Secure the upper shock mount in a table vice. Using a 1-11/16" hole saw, remove the center bushing.

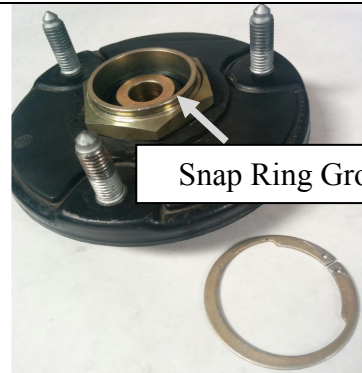


3 – Using a sharp razor knife, trim the rubber around the entrance to the bushing hole down to the bare metal as shown to the right. The rubber is to be trimmed on both sides of the plate. The monoball inserts will seat against the exposed metal to ensure a tight and secure fit.



Rubber trimmed here

4 – Insert the monoball insert from the bottom side of the mounting plate. Install the included nut on the top side of the mounting plate and finger tighten.



Snap Ring Groove

5 – Secure the assembly by clamping the monoball housing hex flats in a bench vice. Using a 1- 15/16 socket, tighten the nut. Torque to 60ft/lbs and install the snap ring.



6 – Install the assembled mount plate onto the shocks and torque down the strut top nut to factory specs. Refer to shop manual for procedure and torque specifications.

7 – Test drive the vehicle. If there is any rattling noise, recheck all of your work.



This page intentionally left blank.