



### 964/993 Rear Upper Shock Mount - Installation Instructions

Part #s 2152201, 2152205, 2152206

#### Cars applicable:

Part #2152201 - 964: 1989-90, 1991 up to the following VINs

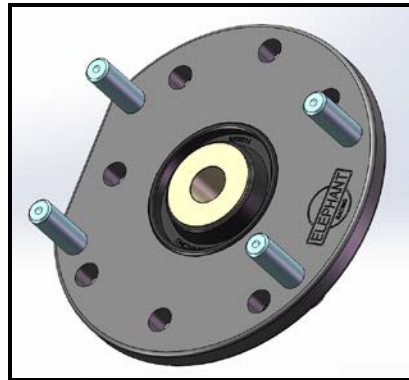
	USA/CAN	Rest of World
Coupe	WPOAB2964MS410519	WPOAB2964MS401468
Targa	WPOAB2964MS440241	WPOAB2964MS430300
Cabriolet	WPOAB2964MS460467	WPOAB2964MS450778

Part # 2152205 - 964: 1991-94 (VIN numbers following the above)

Part # 2152206 - 993 all model years

#### Parts list:

Description	Quantity included by part number		
	2152201	2152205	2152206
Rear Shock Mount Assembly	2	2	2
M8 Deformed Thread Locking Nuts	6	6	8
M8 Flat Washers	6	6	8
Shock Attachment Spacers	2	0	0



Rear Upper Shock Mount Assembly (P/N 2152206 shown)

#### Tools Required:

- Basic Mechanic's Tool set

#### Introduction:

Congratulations on your selection of the Elephant Racing 964/993 rear upper shock mount! This kit works with both coilover setups as well as a factory or "lowering spring" arrangement.

These mounts use high strength hardened steel spherical bearings and are direct replacements for the factory mounts which use compliant rubber bushings. The teflon lined spherical bearings used in our kit are maintenance free and require no supplemental lubrication. The bearings are sealed to prevent contamination from water or grime, thus extending bearing life.

## Step-by-Step Installation

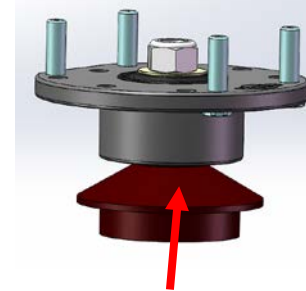
### Coilover installation

1 – Safely raise and support the vehicle at approved positions per an appropriate shop manual

2 – Remove the upper shock mount from the car and shock absorber.

3 – Install the Elephant Racing upper shock mount onto the shock and into the car. For a coilover setup, an upper spring perch, such as Elephant Racing Part No. 2280914 (Available separately), is required. Torque all fasteners to factory specifications

**IMPORTANT:** For Early 964 cars, the supplied spacers must be used in order to properly position the shock on the upper mount and spring perch.



Von Shock Upper  
Spring Perch

4 – Re-install the wheels and lower the car. Test drive to ensure everything is tight and working as intended.

## 964 Factory or Lowering Springs Installation

1 – Safely raise and support the vehicle at approved positions per an appropriate shop manual

2 – Remove the upper shock mount from the car and shock absorber.

3 – Use the Elephant Racing upper spring perch **Kit# TBD** (available separately) and the Elephant Racing rear shock mount to reassemble the shock with the Elephant Racing rear shock mount.

**IMPORTANT:** For 964 cars using Kit # 2152201, the supplied spacers must be used in order to properly position the shock on the upper mount and spring perch.



4 – Re-install the shock assembly into the car. Torque all fasteners to factory specifications.

5 – Re-install the wheels and lower the car. Test drive to ensure everything is tight and working as intended.

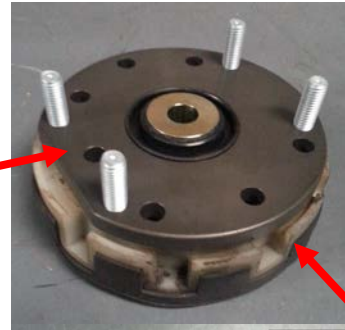
### 993 Factory or Lowering Springs Installation

1 – Safely raise and support the vehicle at approved positions per an appropriate shop manual

2 – Remove the upper shock mount from the car and shock absorber.

3 – Some modification to the factory upper spring perch is necessary in order to use stock or lowering springs.

Elephant Racing  
Upper Mount  
Assembly



In order for the spring perch to sit square against the Elephant Racing upper shock mount assembly, a rotary tool or other cutting implement must be used to create clearance for the fastener heads in the factory upper spring perch.

Ribbing to  
be trimmed



993 Upper  
Spring Perch

The ribbing on the underside of the spring perch should be trimmed in such a way that the perch sits square against the underside of the upper shock mount assembly.

993 application  
stud positions



4 – Re-install the shock assembly into the car. Torque all fasteners to factory specifications.

5 – Re-install the wheels and lower the car. Test drive to ensure everything is tight and working as intended.