



QuickChange™ Strut Brace - Installation Instructions

Part # 2162210, 2162211, 2162214

Cars applicable:

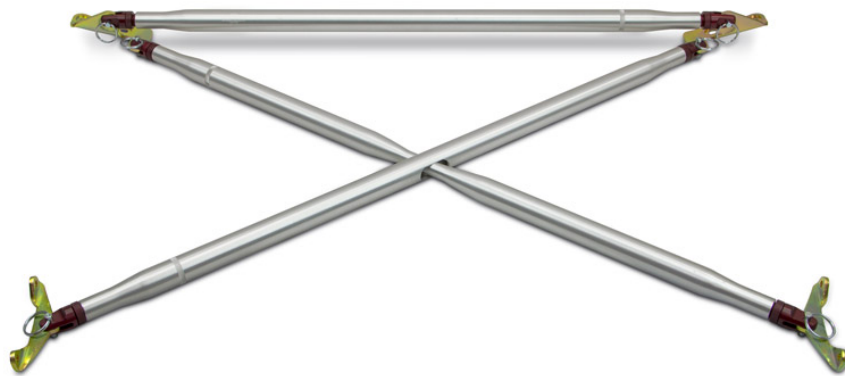
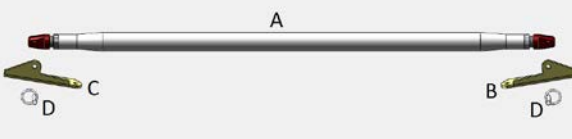
993/964

Introduction –

Congratulations on your purchase of the Elephant Racing QuickChange Strut Brace!

Our unique QuickChange™ strut-brace system is expandable to grow with your needs. Quick release pins let you remove or reconfigure in minutes.

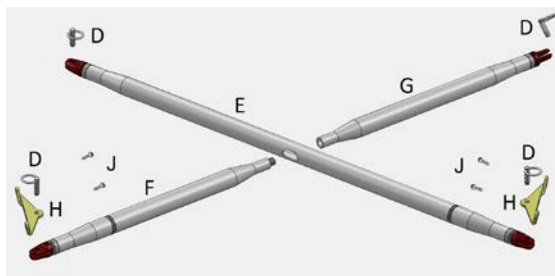
The QuickChange Strut Brace system is available in two configurations as shown below; the primary **Single Bar** strut brace and the **935 X Brace** additive configuration.

2162210 - **Single Bar** QuickChange strut brace

Parts list:

item	Qty	Description
A.	1	Horizontal brace assembly
B.	1	Rear bracket driver side
C.	1	Rear bracket passenger side
D.	2	Quick release pins



2162211 - **935 X Brace** QuickChange strut brace
(shown with 2162210 Single Bar QuickChange strut brace)

Parts list:

item	Qty	Description
D.	4	Quick release pins
E.	1	X brace long assembly
F.	1	X brace medium assembly
G.	1	X brace short assembly
H.	2	X brace lower bracket
J.	4	Sheet metal screws

Before beginning

Your brace will attempt to hold any twist in the chassis at the time of installation. Perform installation on flat ground, with proper tire inflation, and proper corner balance to avoid chassis twist.

Assemble all brace assemblies without preload – neutral – neither in compression or tension. This will ease installation / removal of the Quick Release pins and provide the best overall performance under the alternating loads presented by left and right corner and braking.

Read the entire instructions before beginning.

2162210 - Single Bar QuickChange strut brace installation

1 – Install Rear brackets

Remove the two nuts closest to the front of the car on both the driver and passenger side strut mounts. Install Rear brackets [B] and [C] onto the factory strut mount studs. Re-install the nuts finger leaving them tight for now. Carpeting must be cut to accommodate the brackets.

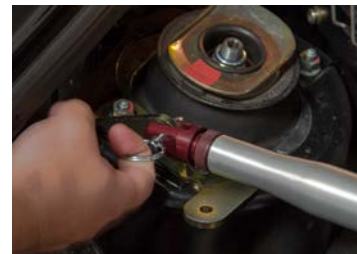


2 – Install Horizontal Brace assembly

Slip the clevis ends over the Rear brackets [B] and [C] as shown. The clevis ends are left and right threaded such that assembly length can be adjusted by rotating the tube.

Loosen the knurled jam nuts and adjust the assembly length to perfectly align the clevis holes with the mating Rear bracket holes with no preload. Secure each clevis to the brackets using the Quick release pins.

Tighten the strut mount nuts to 25Nm (18 ftlb) and tighten the knurled jam nuts hand tight.

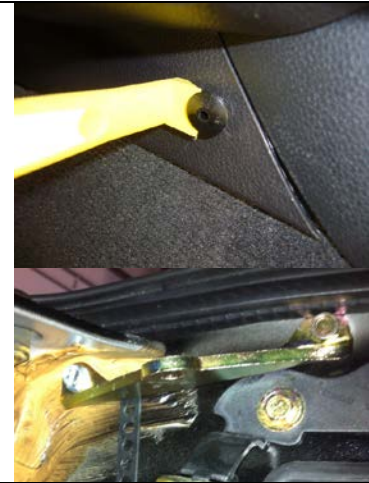


2162211 – 935 X brace addition instructions

1 – Install X Brace Lower Brackets

On cars so equipped, open the front tool compartment panel in the trunk and remove the plastic trim around the trunk latch. This plastic panel must be trimmed to fit the X brace lower brackets.

Using a 10mm wrench, remove the two forward most fender screws on each side. You may need to scrape away some of the body putty around the forward screw. Install the X brace lower brackets using these holes and the provided sheet metal screws. Tighten the screws until snug.



2 – Install X Brace Long assembly

Slip the clevis ends over the Rear bracket [C] and front bracket. Install the knurled end of the rod towards the rear of the car. The clevis ends are left and right threaded so that assembly length can be adjusted by rotating the tube. Loosen the knurled jam nuts and adjust the assembly length to perfectly align clevis holes with mating bracket holes. Secure each clevis to the Rear bracket [C] and Front bracket [H] using the Quick release pins.



3 – Install X Brace Medium and Short assemblies

Join the X Brace Medium assembly [F] and the X Brace Short assembly [G], threading them through the oval hole in the X Brace Long assembly with the knurled end of the rod towards the front of the car. Tighten them together like a pool cue forming one continuous assembly.

Slip the clevis of the X Brace Short assembly over the Front bracket [H]. Loosen the knurled jam nuts and adjust the assembly length to perfectly align clevis holes with mating bracket holes. Secure each clevis using the Quick release pins.

Tighten all knurled jam nuts hand tight.





this page intentionally blank