



## Adjustable Rear Toe Link - Installation Instructions

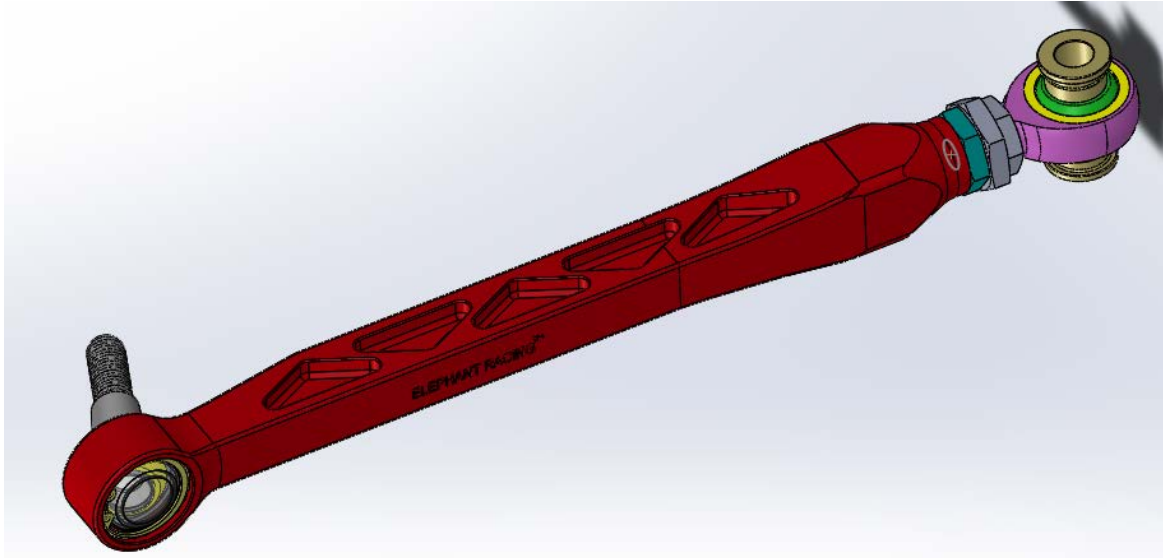
Part #2180020

### Cars applicable:

981 Boxster and Cayman - 2012+

### Parts list:

Quantity	Description
2	Adjustable Rear Toe Link Assembly



Adjustable Rear Toe Link

### Tools Required:

- 18 mm wrench (socket or open end/box type)
- 19mm wrench (socket or open end/box type)
- 22 mm open end wrench
- 24 mm open end wrench
- 28mm open end wrench
- 6mm Allen Key
- Tie Rod end separator

### Introduction

Congratulations on your purchase of the Elephant Racing Adjustable RearToe Links for the 981 Boxster and Cayman! Lowering or dialing in an aggressive camber setting on the rear of the 981 can cause the toe adjustment to exceed its range; making it impossible to achieve the desired toe.

The Elephant Racing rear toe links provide enhanced range of toe adjustment beyond what is capable from the factory. The factory eccentric bolt toe adjustment works hand in hand with Elephant Racing's turnbuckle style link design, making it easy to dial in the required toe settings for even the most aggressive of ride heights or camber settings.

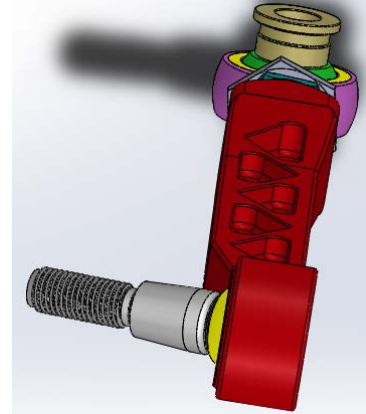
**Step-by-Step Installation -**

1– Remove the OEM rear toe links per an appropriate shop manual

2– Install rear toe links

Installation is performed the same as the factory rear toe links. Refer to an appropriate shop manual for specifics.

Re-use the factory mounting hardware and torque to factory recommended values.



3 – Ensure all fasteners are properly torqued

4 – Align Toe

Following Installation, the vehicle toe should be aligned by a trained professional.

**Toe Adjustment**

To adjust the toe, first attempt to attain the desired setting using the factory eccentric bolt as normal. Torque the fasteners as called out in an appropriate shop manual once the desired position has been set.

If more adjustment is required than is allowed, position the eccentric so the toe link is closest to the desired setting (either shortest or longest position). Torque the factory fasteners as called out in an appropriate shop manual. The Elephant Racing toe lockout kit (available separately from Elephant Racing) can be used to ensure this setting does not change under repeated load. Loosen the rod end jam nuts Items (1 &3 in the illustration)

While the ends of the Adjustable Toe Link are still attached to the car, use a 28mm wrench on the center hex section of the toe link to lengthen or shorten the Toe Link Assembly (#2 in the illustration).

Once the desired toe adjustment is set, tighten the jam nuts 1 and 3 down onto the barrel of the toe link.

Rotate the middle hex to lengthen or shorten the Toe Link Assembly

