

991 Rear Lower Shock Mount Bushing Removal/Installation Tool - Instructions for use.

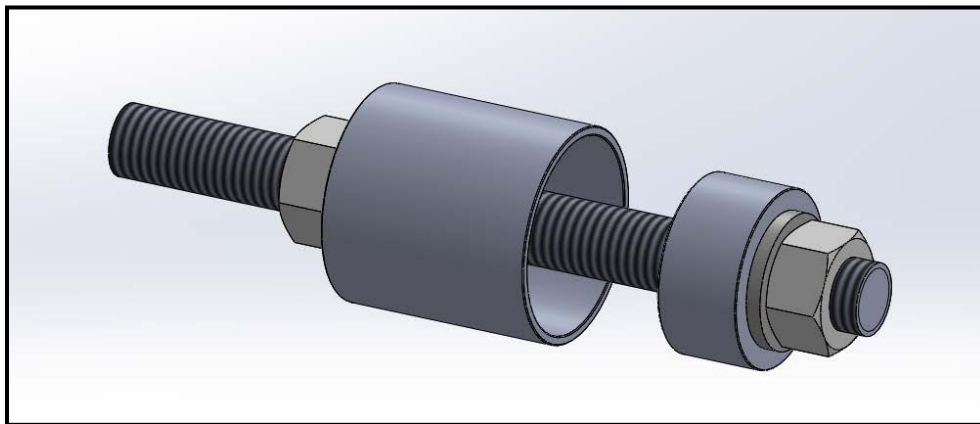
Assembly #: 2260017

Cars applicable:

991

Parts list:

| Quantity | Description |
|----------|--------------------------|
| 1 | Cup |
| 1 | Piston |
| 1 | Threaded Rod |
| 2 | M16 Hex Nut |
| 2 | M16 Standard Flat Washer |



Elephant Racing Part No. 2260017: Bushing Removal Tool Assembly

Tools Required:

- Basic Mechanic's Tool set

Introduction:

We understand that the task of removing the wheel carrier and pressing the old bushings out, and the new ones in can be a daunting task. That's why Elephant Racing has devised a set of tools to make removing your old bushings and installing your new inserts as easy as possible; no removal of the upright required.

Step-by-Step Instructions:

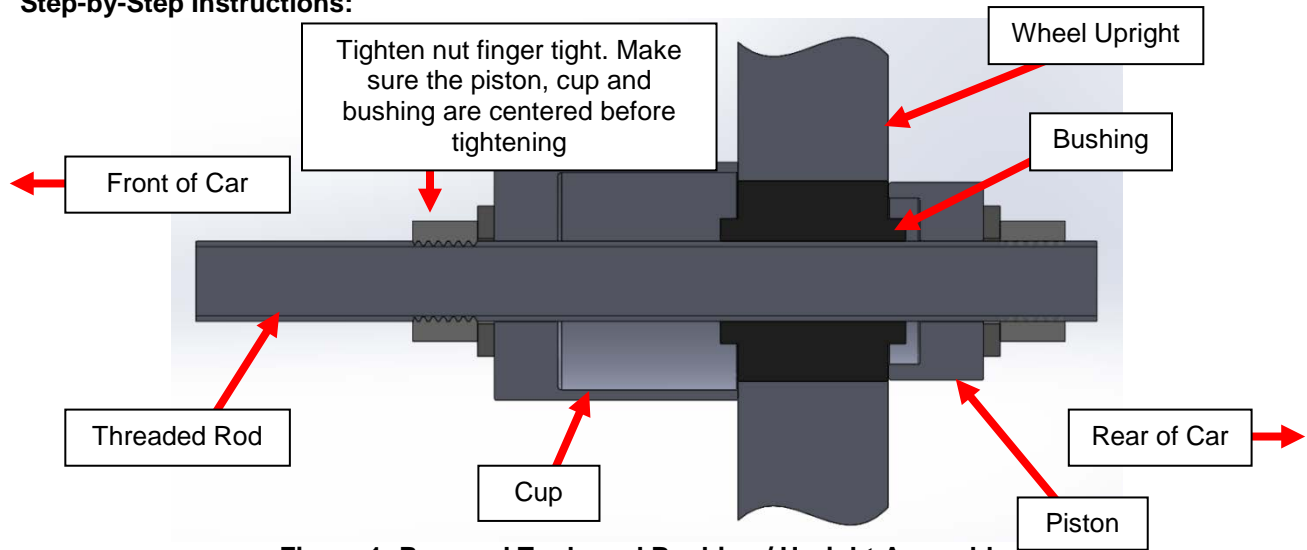


Figure 1: Removal Tools and Bushing / Upright Assembly

Bushing Removal

1 – Safely raise and secure the vehicle, then remove the rear wheels.

2 – Disconnect the lower control arm from the wheel upright. Disconnect the rear shock from the lower mount. Refer to an appropriate shop manual for more detailed instructions.

3 – Position the parts and tools as shown in Figure 1. Using two wrenches, tighten the nuts to draw the bushing into the removal cup.

Bushing Installation

1 – The bushing should be installed from the side of the wheel carrier closest to the rear of the car. Slide the threaded rod through the piston, bushing, and removal cup. Install the nuts and washers on either side of the assembly and tighten finger tight.

2 – Use two wrenches to tighten the nuts. Ensure the bushing is concentric as it is drawn into the wheel carrier. Continue tightening the nut until the bushing is positioned appropriately in the wheel upright. See Figure 1 for a depiction of an installed bushing.