

Manual Adjust Bladed Rear Sway Bar - Installation Instructions

Part # 2270023 Medium
2270021 Firm

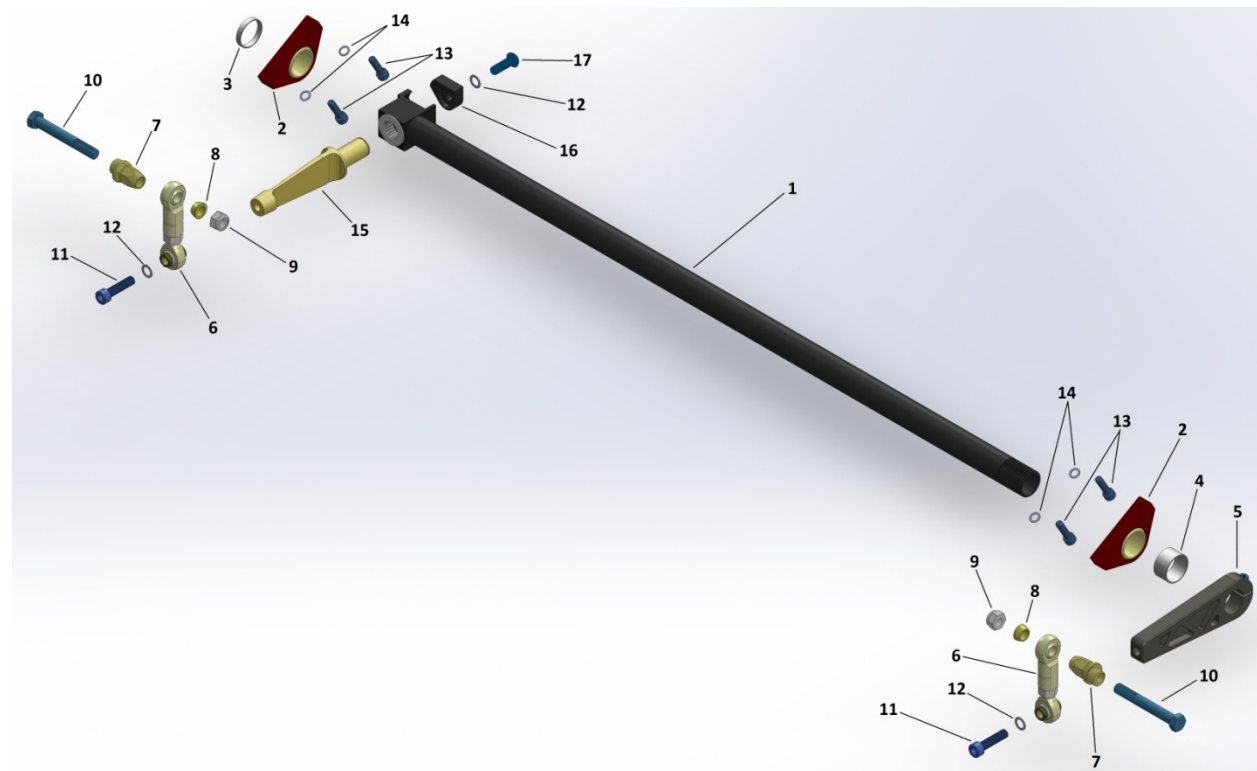
Cars applicable:

'69 -'89 911/912/930

note: cars '69-'77 must upgrade to the '78-'89 type chassis mounts with 66mm bolt spacing

Parts list:

Ref #	Qty.	Description	Ref #	Qty.	Description
1	1	Manual Adjustable Sway Bar	10	2	M12 x 90 Hex Bolt
2	2	Sway Bar Mounting Blocks	11	2	M10 x 40 Socket Cap Screw
3	1	Left Side Bar Spacer	12	3	M10 Schnorr Washer
4	1	Right Side Bar Spacer	13	4	M8 x 30 Socket Cap Screw
5	1	Fixed Arm	14	4	M8 Schnorr Washer
6	2	Rear Drop Link	15	1	Adjustable Blade
7	2	Camber Adjuster/Spacer	16	1	Blade Locking Block
8	2	Drop Link Spacer	17	1	M8 x 16 Socket Head Screw
9	2	M12 Hex Nylock Nut			



Required But Not Included -

Introduction -

Sway bars are one of the essential tuning devices involved in a proper suspension setup. While many factory and aftermarket bars have multiple holes for adjustment, this causes undesirable

transmission angles through the drop links. The result of this is non-linear roll stiffness adjustments and potentially unpredictable handling.

The proper solution for optimized geometry and predictable handling is the Elephant Racing's Manual Adjustable Bladed Sway Bar. This bar features a blade of fixed length which maintains proper force vectors at all times. The bladed design also offers unmatched resolution for roll stiffness adjustments. Along with these advantages is the reduced time for adjustment. The ER Bladed Sway Bar can be adjusted within minutes allowing for changes to be made without hesitation.



Installing the Sway Bars -

1. Assemble the bar with both side spacers and sway bar mounting blocks.
 2. Bolt the sway bar mounting blocks to the chassis.
 3. Slide the fixed arm onto the end of the bar. Make sure that the arm is level with the blade on the opposite side of the bar.
 4. To prevent side to side movement of the bar, make sure to push the fixed arm in before tightening the clamping bolt.
10. The drop link assembly should look like the image to the right but with the male threaded rod end on top.

note: cars '69-'77 must upgrade to the '78-'89 type chassis mounts with 66mm bolt spacing

