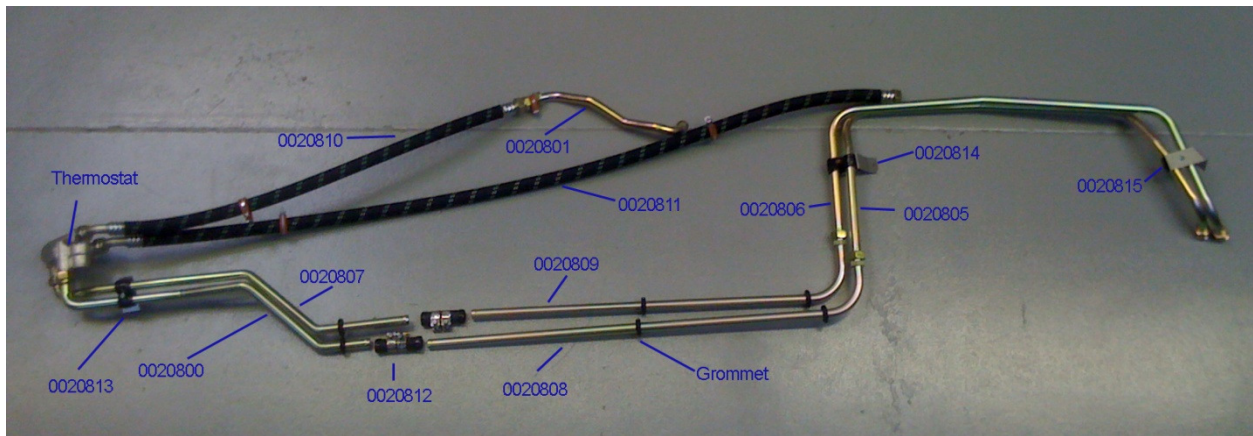


914-6 Oil Cooler Plumbing System

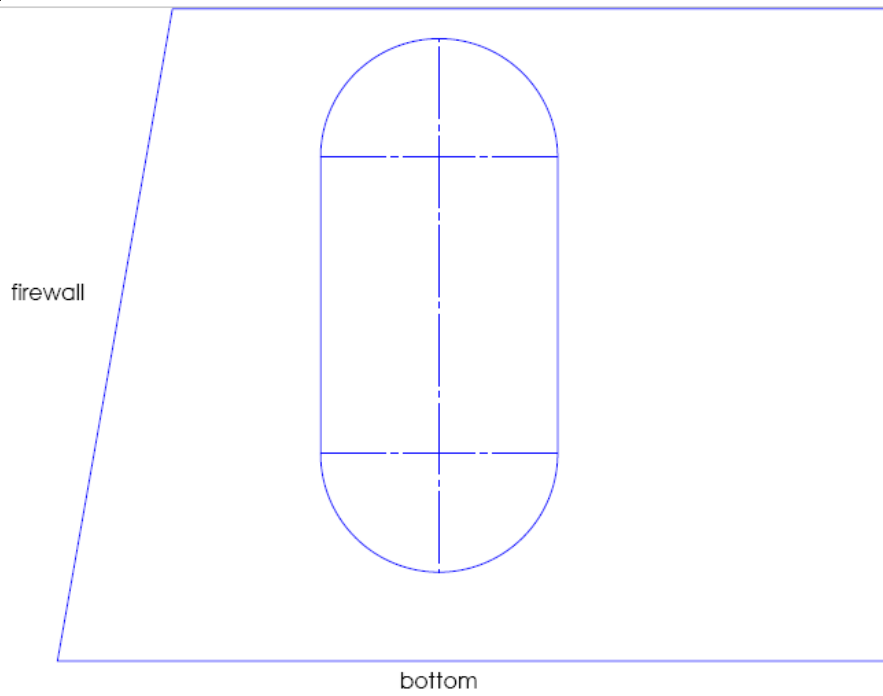
The 914-6 Oil Cooler Plumbing system provides everything needed to plumb from the tank and case to the front of the front wheel well on a 914-6 or 6 conversion. It accommodates 26mm or 30mm fittings on the oil tank, and 30mm fittings on the case.

Reference the following image as you view the installation illustrations and tips.



Some holes must be cut in the chassis to allow installation of the hoses and hard pipes. A series of templates are provided to assist in positioning those holes.

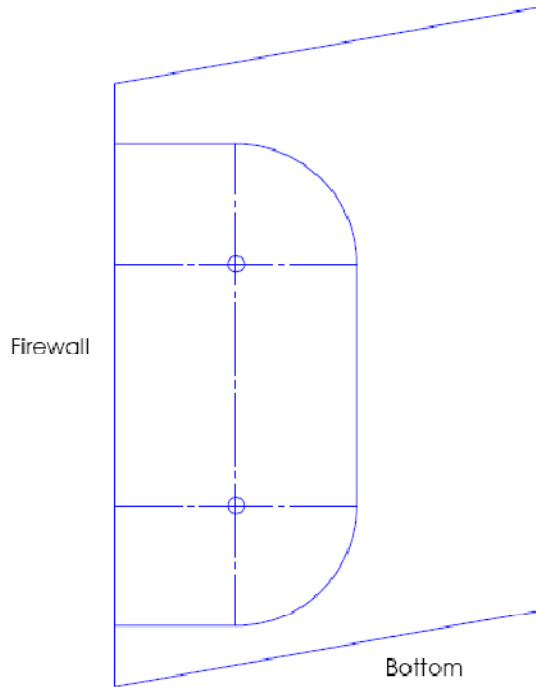
Cut out the templates and tape them to the chassis to position holes.



0020800D - Engine top side template, through wheel well

Template shown for reference, Not to scale – use scale drawing provided

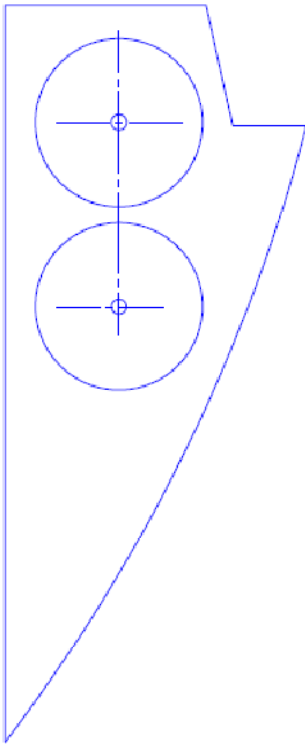




0020800E – Engine bottom side template, up to battery area

Template shown for reference, Not to scale – use scale drawing provided

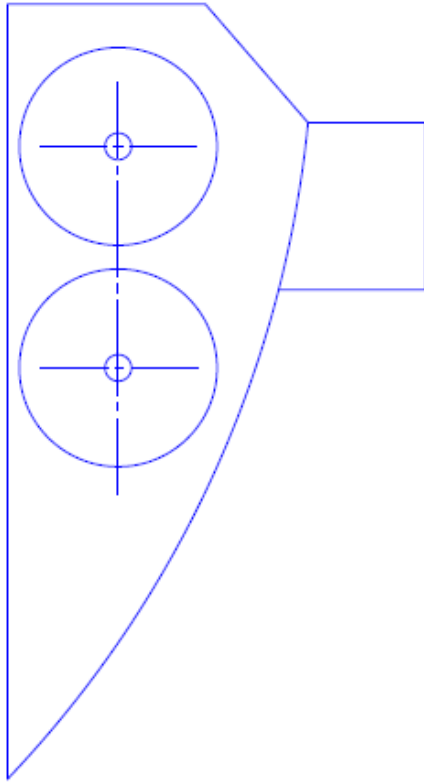




0020800H Rocker rib template

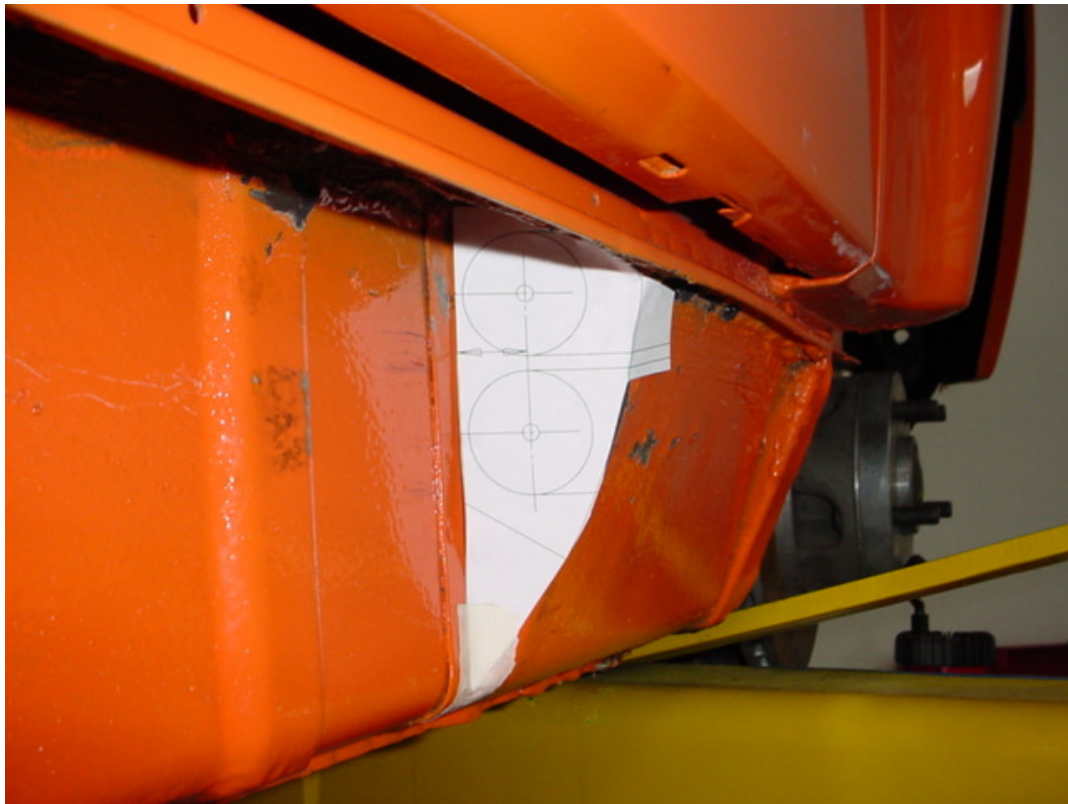
Template shown for reference, Not to scale – use scale drawing provided

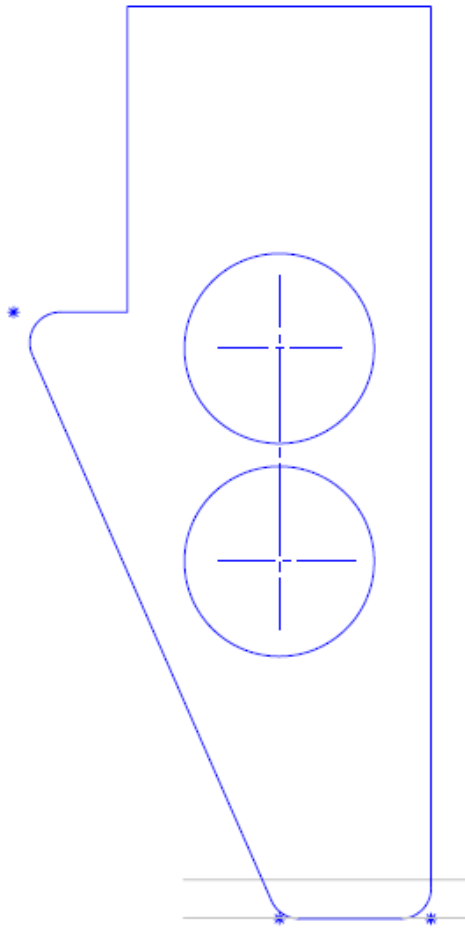




0020800G Beveled rib template

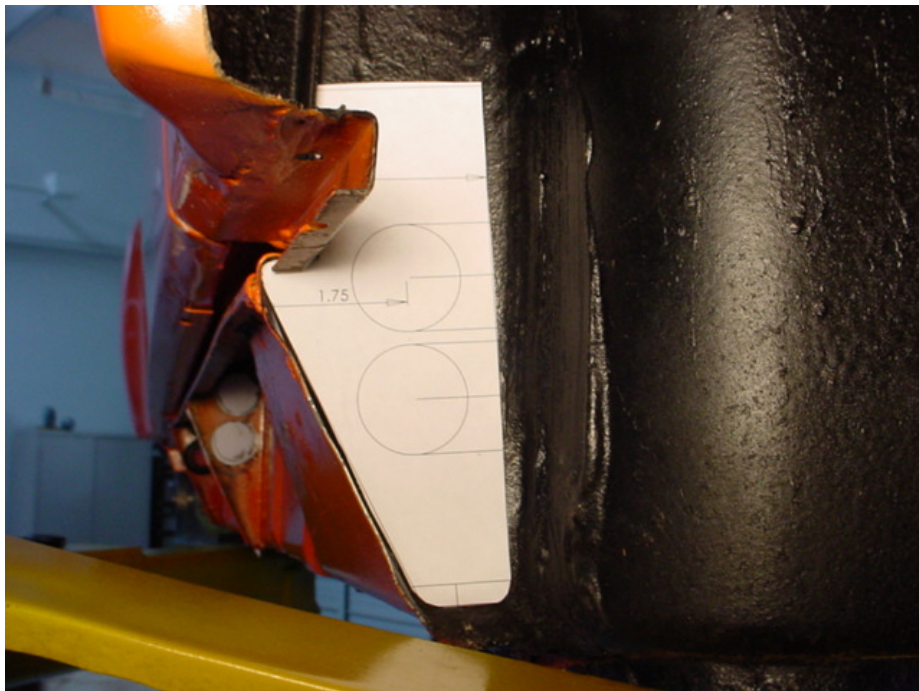
Template shown for reference, Not to scale – use scale drawing provided

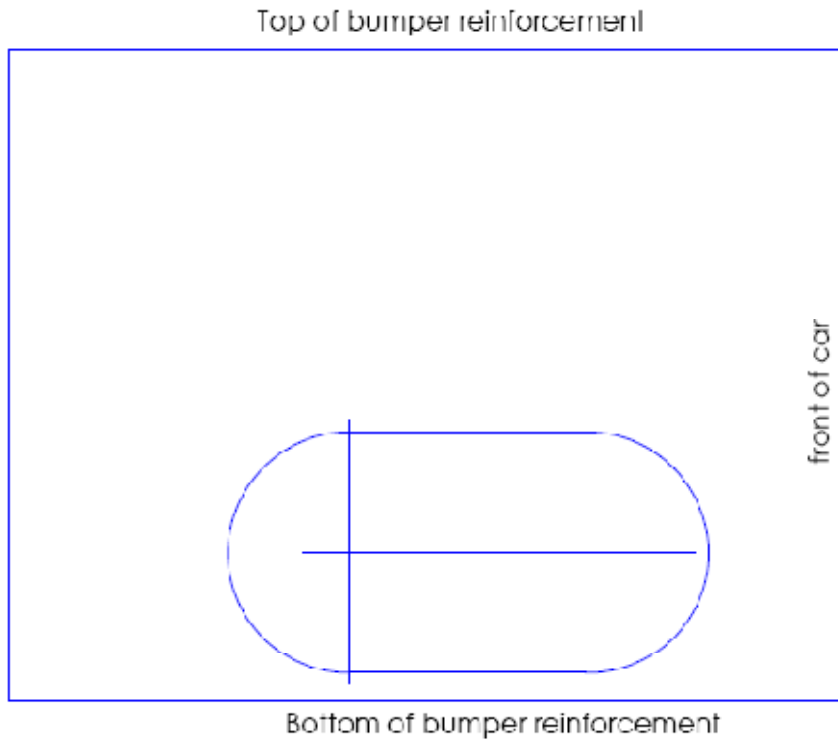




0020800F – Front wheel well, rear template

Template shown for reference, Not to scale – use scale drawing provided





00208001 Front wheel well template, center cooler hoses

Template shown for reference, Not to scale – use scale drawing provided

Fit into bumper reinforcement



Use 1.25 inch hole saw to open up rocker ribs using the provided templates

Rocker ribs can also be enlarged using a 1.25 inch Greenlee punch.



Install grommets in ribs. Note that there are no grommets in the rear of the beveled rib.



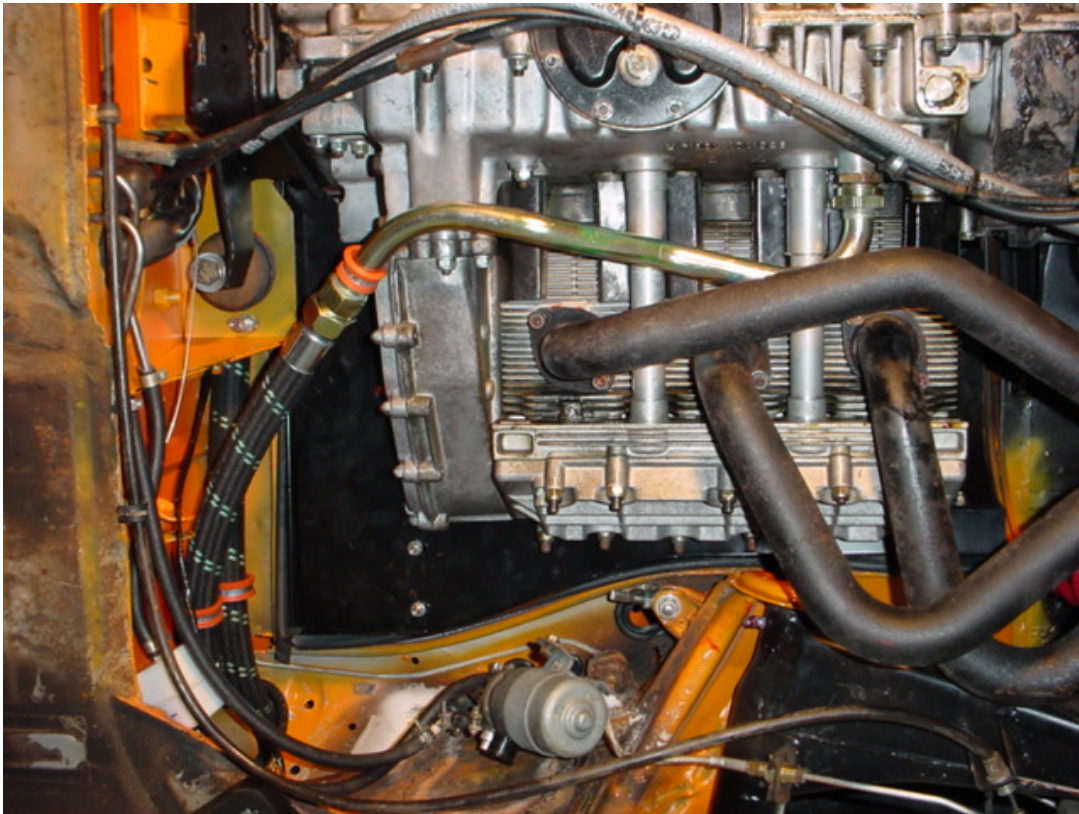
Use 1.75 inch hole saw to open hole to tank



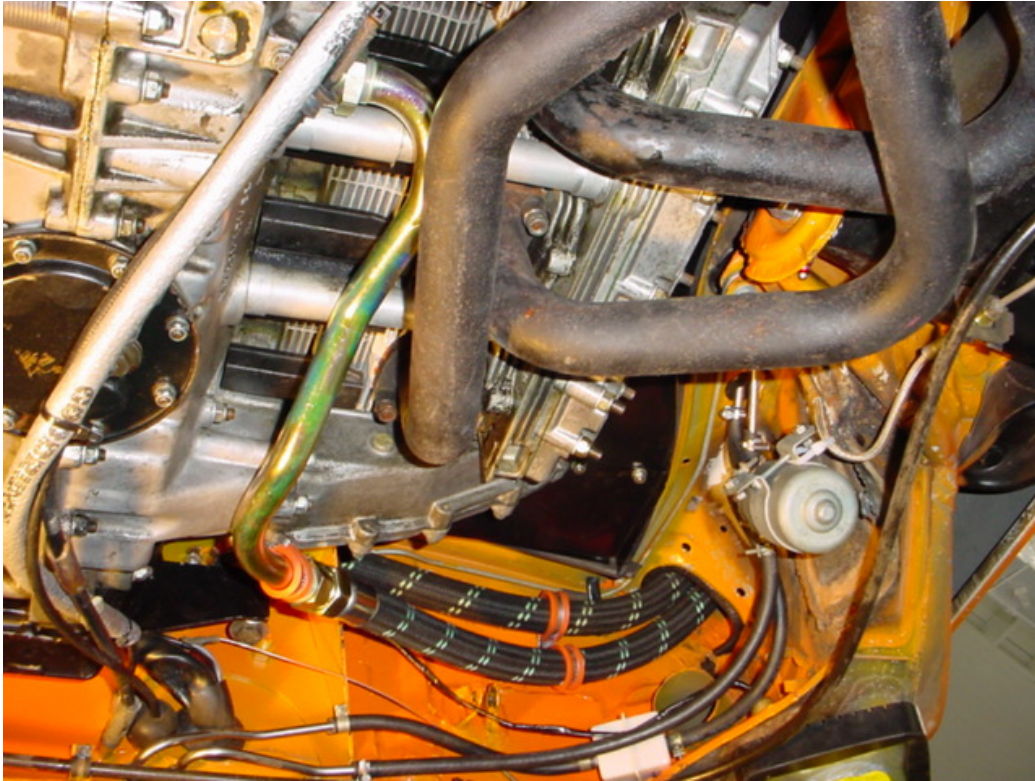
Install 26mm to 30mm adaptor on oil tank. Dress oil tank hose 0020811 over transmission



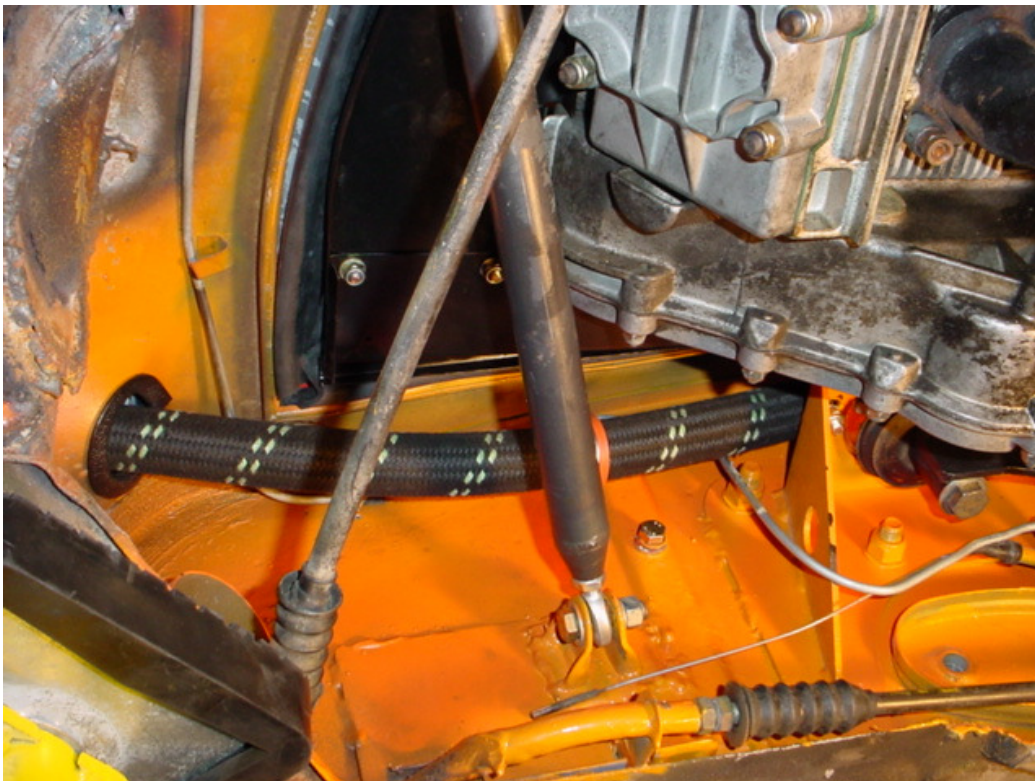
Install scavenge pipe 0020801 to case. Use 1 inch hose clamp to support end of pipe, attach to chain housing bolt.



Dress oil tank hose 0020811 over transmission hosing and through wheel well. Dress scavenge hose 0020810 through wheel well and attach to scavenge pipe. Protect hole edge with molding. Install 2 x 1.25 inch clamps for hose support.



Protect oil tank hose with edge molding. Secure hose to firewall with 1.25 inch hose clamp.



Protect hole edge with molding. Attach thermostat to hoses 0020810 and 0020811. Thread hard pipes 0020800 and 0020807 down and over jack receiver.



Support bracket 0020813 shown loosely assembled. Note M10 cap screw threads into trailing arm front-most mounting boss. Remove plastic cap from boss to expose threads.



Thermostat installed with bracket 0020813 and hoses 0020810, 0020811



Install hard pipes 0020808 and 0020809 through grommets. Use silicone spray to lubricate grommets for easier insertion.



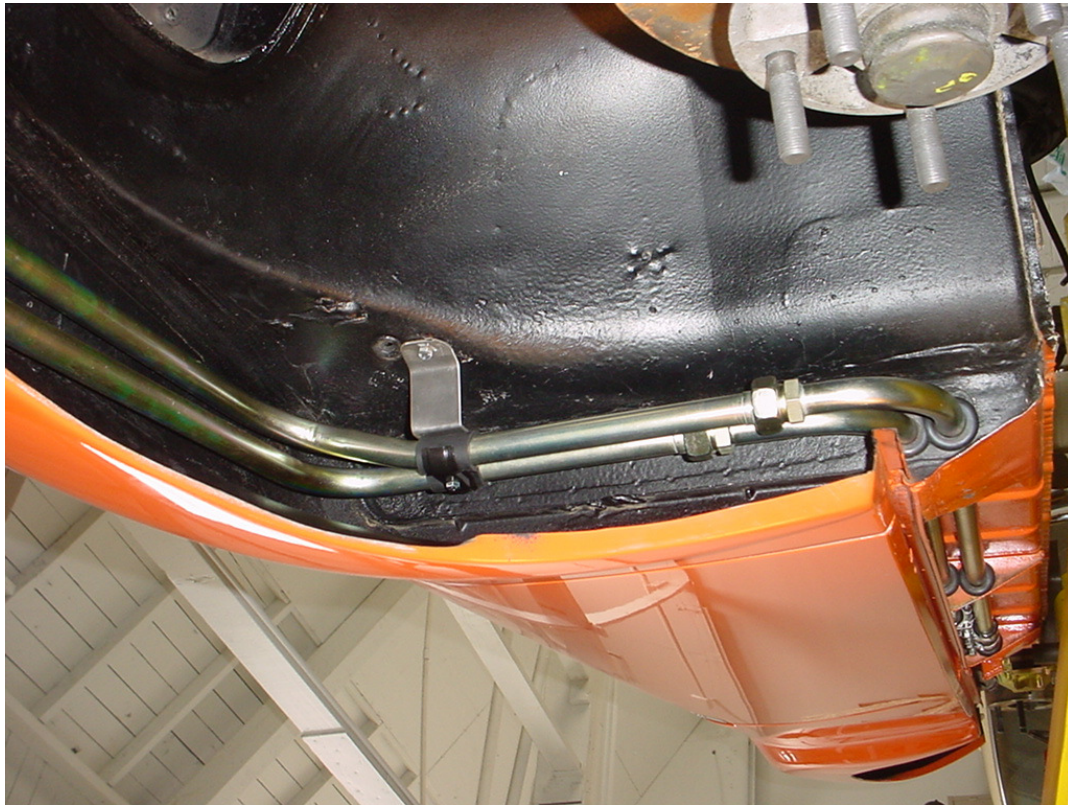
Install hose assemblies 0020812. Orient clamp bolts as shown.



Install front extension hard pipes 0020805 and 0020806.



Install bracket assemblies 0020814 and 0020815. Drill one .25 inch hole through fender for 0020814.



Front bracket 0020815 attaches to existing stud on the back of the turn signal.



